



Model	DRUM MACHINE-MODEL PS1E
	4' x 4'; 1,000# CAPACITY
	5' x 5'; 1,500# CAPACITY
	5' x 5'; 2,000# CAPACITY; VERTICAL LIFTING DOOR
	5' x 7'; 4,000# CAPACITY
	6' x 6'; 2,000# CAPACITY; SAFETY SCREENS
	CALL FOR LARGER UNITS
	HOLELESS HYDRAULIC UNITS AVAILABLE

TIME AND LABOR SAVINGS

SIDEWALK ELEVATOR with *SAFETY SCREENS* – ANSI/ASME A17.1 Code

Safety Screens allow one operator to ride in both directions versus typical two-person operation.

Code requires **operation of all sidewalk elevators from grade only** since a rider-operator is unable to determine whether a person or other obstacle is on the closed sidewalk door. Two people, an operator and a loader, are normally required – or one person to load and then go up to grade for operation.

Code Requirements:

- Hinged safety screens located beneath and parallel to the sidewalk door.
- Scissor or folding car gates.
- Push button stations on car and in the basement.

Operation is as follows:

- Car is called to grade by operator standing at sidewalk door level.
- Operator then secures the sidewalk doors in open position by using the furnished locking bar.
- Operator can now enter car and operate with push button station (also at basement level) as a full freight elevator, with screens closing for safety as car descends. Riding up operator has full vision through the screens.
- When operator is done unloading, returns to the sidewalk level and removes locking bar which allows the sidewalk doors to close as the car is being lowered to basement level.

OPTIONS:

1. Maximum security *automatic locking device* on sidewalk door.
2. Folding car gates with *90° swing feature* (allows full car width clearance).
3. Roto-Phase generates *3 phase* from single phase source.
4. Sidewalk doors – in steel, aluminum or stainless steel.
5. Elevator/lift can be designed to rise above grade to the height of a truck bed, operating like a dock lift for easy loading/unloading.
6. Extra heavy-duty “truckable” sidewalk doors.
7. Single or double swing U.L. labeled door and frame assembly for basement.
8. Design to suit existing hoistway or renovation.
9. Three or more stops. Can operate like a freight elevator below grade or a loading dock above grade at “trucking” height.
10. Remote machine room.
11. Helipad gurney roof-top passenger elevators, and holeless hydraulic units.

NOTE: We offer free consulting to assist in problem solving and Code compliance.



Universal Elevator®

Specializing in Custom Elevators

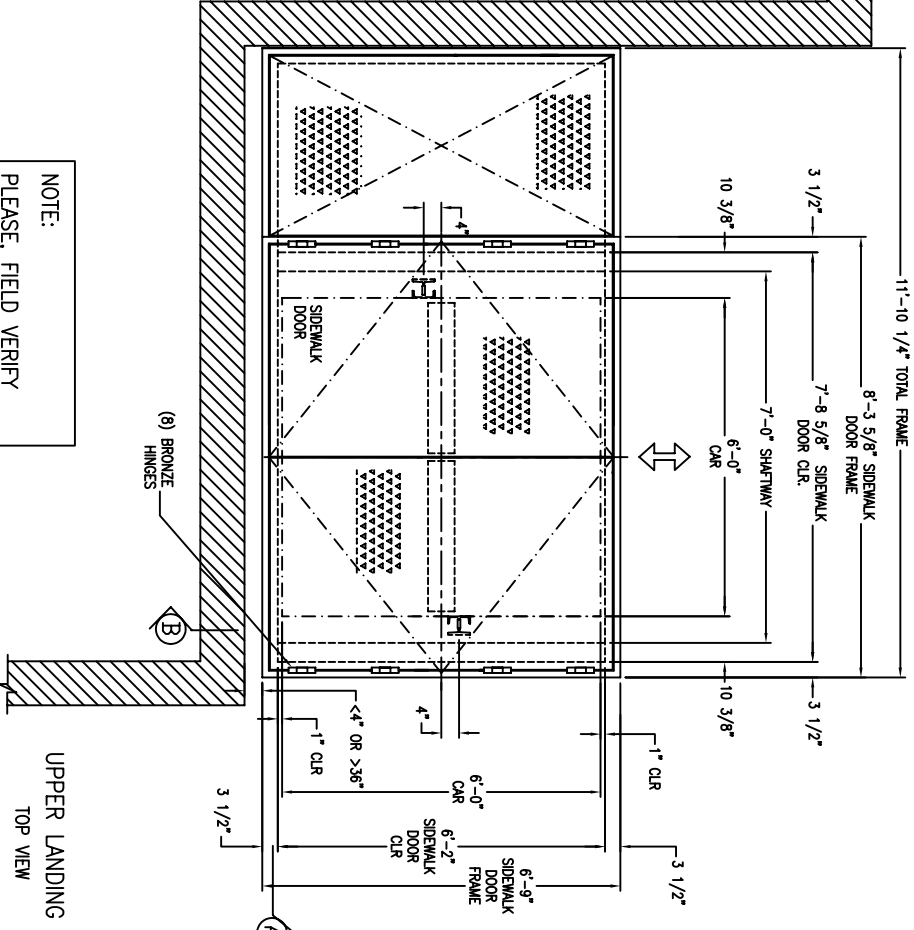
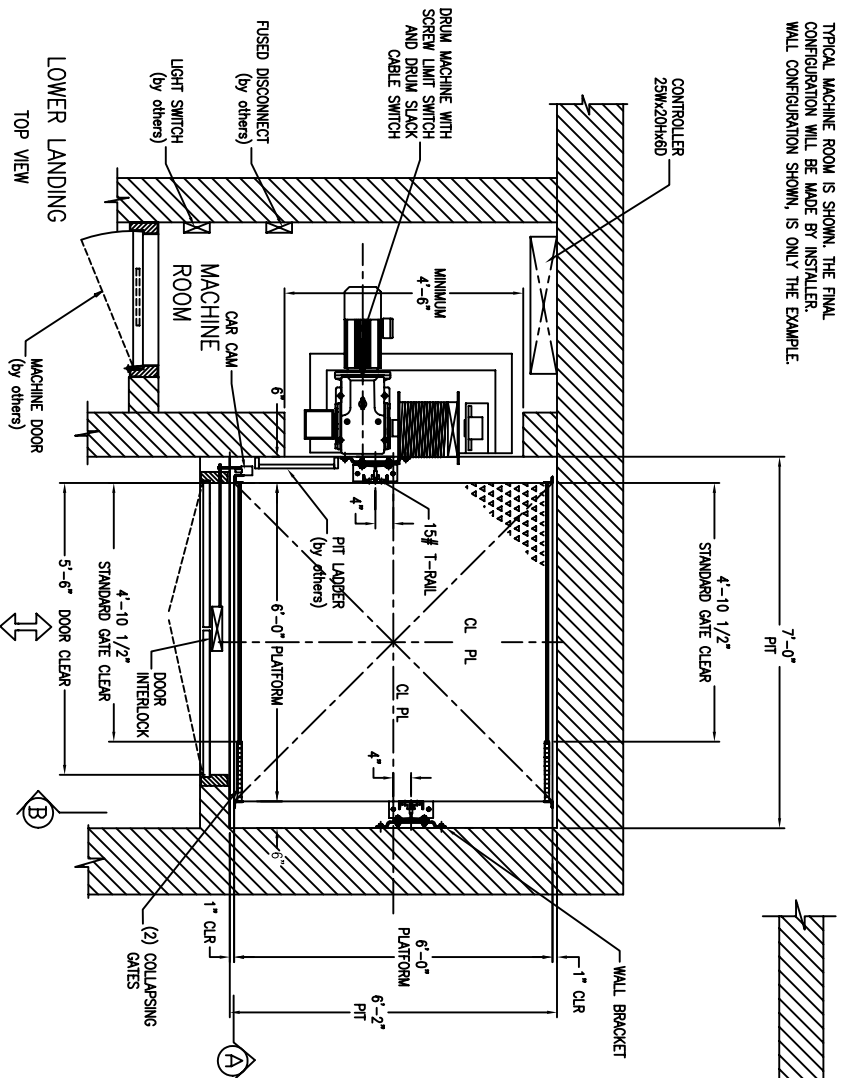
<http://www.universalelevator.com/>

<http://www.mrelevators.com>

452 Yacht Club Dr. P.O. Box 848 Rockwall, Texas USA 75087
 Toll Free 1-800-547-0747 1-972-722-8001 Fax 1-877-810-7806

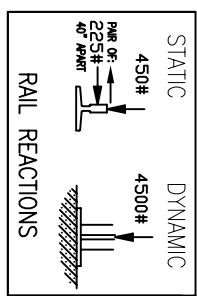
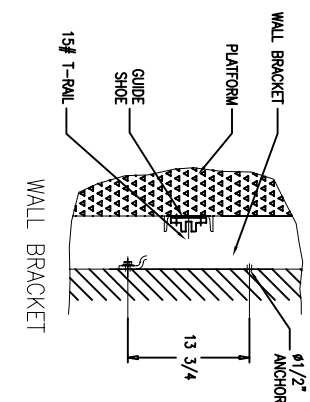
Sales@universalelevator.com

NOTE:
 TYPICAL MACHINE ROOM IS SHOWN. THE FINAL CONFIGURATION WILL BE MADE BY INSTALLER. WALL CONFIGURATION SHOWN, IS ONLY THE EXAMPLE.



NOTE:
 PLEASE, FIELD VERIFY ALL DIMENSIONS AND CONFIGURATIONS.

- DOUBLE SWING, 5'-6"Wx6'-8"H
- HOSTWAY DOOR ASSEMBLY U.L. LABELED, INSTALLATION READY, PRE-FITTED WITH LATCH, CLOSER, INTERLOCK AND VISION PANEL.
- SIDEWALK DOOR: 1/4" DIAMOND PATTERN DOOR PLATE, (8) DETACHABLE FLUSH HEAVY CAST BRONZE HINGES, TWO WING HINGED SAFETY SCREEN, ATTACHED TO SIDEWALK DOOR FRAME, 1" DIA. PIPE TAPPED HOLE FOR DRAIN, STOP CHAIN, STRIKE PLATES, GUARD BAR.
- 1/4" DIAMOND PATTERN COVER PLATE, WITH STEEL FRAME, ONE COAT JET BLACK ASPHALTUM.
- PAINTING ONE SHOP COAT BLACK PRIMER.
- BY OTHERS PROVIDE ELECTRIC POWER TERMINATED IN FUSED DISCONNECT SWITCH, SETTING OF SIDEWALK DOOR AND FINISH PAINTING, SHAWTWAY WIRING, CONDUIT, TRAVELING CABLE TO CAR, PIT LADDER, PIT SWITCH.



Universal Elevator USA	
800-547-0747 & 1-972-722-8001	
JOB:	
LOCATION:	
ARCHITECT:	
CONTRACTOR:	
LOCATION:	
FILE NAME:	8964-2.dwg
ENGINEER:	MF DATE:
SO:	8964
CHECK:	
SHEET 2 OF 2	



Universal Elevator®

Specializing in Custom Elevators

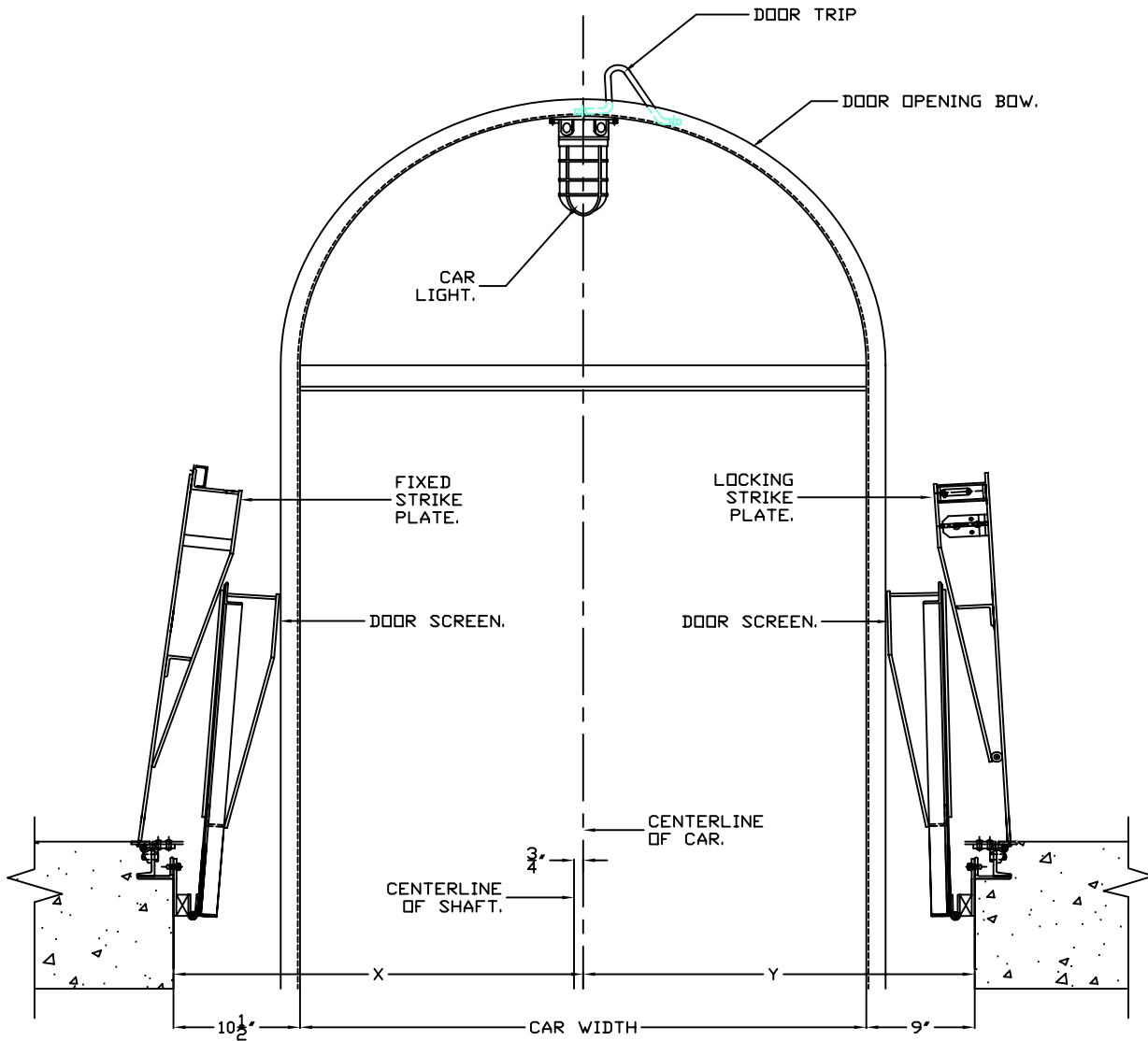
452 Yacht Club Dr. P.O.Box 848 Rockwall, Texas USA 75087

Toll Free.1-800-547-0747 1-972-722-8001 Fax 1-877-810-7806

<http://www.universalelevator.com/>

Sales@universalelevator.com

<http://www.mrlelevators.com>



<http://www.universalelevator.com/UEC.Sidewalk.Elevator.Pictures.pdf>

Universal Elevator USA			
1-800-547-0747 & 1-972-722-8001.			
SCALE	DR. BY PAM	CK. BY	APPV.
DATE	REV.	REV.	REV.
BOW, DOOR & SCREEN LAYOUT			